

A photograph of two cheetah cubs sitting on a log in a natural setting. The cub on the left is standing on its hind legs, looking towards the right. The cub on the right is sitting and looking upwards. The background is a soft, out-of-focus natural environment.

YOUR GUIDE TO AFRICA



Africa is renowned for its incredible variety of wildlife, colourful cultures, and spectacular landscapes. Deciding where to go and what to see can often be a challenge, so here are a few pointers to help create your dream African journey.

EAST AFRICA

Kenya, Tanzania, Uganda & Rwanda

Kenya and Tanzania are known as the birthplace of the 'safari' and famous for the vast grassy plains of the Masai Mara and the Serengeti, home to huge herds of wildlife and the Great Migration. Uganda and Rwanda are home to the critically endangered mountain gorillas.

SOUTHERN AFRICA

South Africa, Botswana, Zambia, Zimbabwe & Namibia

Southern Africa offers an excellent combination of scenery and experiences from the watery delta of Botswana to the desert landscapes of Namibia and the lesser-visited Zambia – home of the walking safari.





SOUTH AFRICA

There is so much packed into this colourful nation, from sophisticated cities, to scenic winelands and fantastic game viewing in one of the many game reserves.

Cape Town

One of the most stunning cities in the world with the majestic Table Mountain towering over the city, beautiful beaches, and a bustling waterfront area.

Cape Winelands

Picturesque vineyards producing world-class wines, with boutique accommodation and charming Cape Dutch architecture.

Kruger National Park

Best enjoyed in a private game reserve which offers guests up-close and uncrowded wildlife viewing, night drives and bush walks.

Phinda Private Game Reserve

A private game reserve in KwaZulu Natal offering seven distinct habitats, each with incredible game viewing.

Madikwe Game Reserve

A malaria-free reserve, popular with families and mostly traversed by private game lodge vehicles and guests.

Tswalu Kalahari

An exclusive and upmarket experience, Tswalu Kalahari offers a diverse habitat home to species such as meerkats and pangolin.



When to go

While South Africa is a year-round destination, we recommend to go May to September when game viewing is at its best. The foliage is less dense and wildlife comes to water sources to drink.





BOTSWANA

Botswana is home to Africa's most richly populated wildlife areas, with an unsurpassed variety of animals. It offers a pristine and remote wilderness experience which lends itself to the exclusive fly-in safari.

Chobe National Park

Home to the largest concentration of elephant in Africa and excellent game viewing along the Chobe River.

Linyanti Wildlife Reserve

A beautiful pristine private game reserve with low vehicle concentrations. The game viewing in Linyanti offers a remote, undisturbed experience.

Savute

Located within Chobe National Park, Savute is famed for its large population of predators including lion and cheetah.

Okavango Delta

This vast inland delta offers a pristine game viewing experience with small intimate camps only accessible by light aircraft. A World Journeys favourite!

Makgadikgadi Pans National Park

These salt pans are an arid landscape, transformed when it rains, attracting large herds of wildlife.

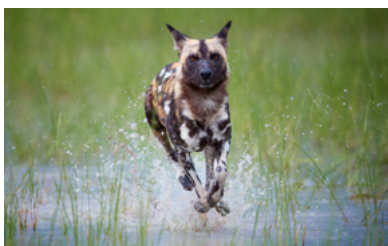
Nxai Pan National Park

This waterless fossil pan comes to life after the summer rains, attracting huge herds of migrating plains game.



When to go

July to October is peak season when the Okavango Delta is in flood and wildlife is restricted to main islands, meaning feasts await for resident predators! Outside of this season, there are many reasons to visit including seeing newborn animals and fantastic birding from December through April.





ZAMBIA & ZIMBABWE

Zambia is the home of walking safaris and a hidden gem offering intimate camps in stunning locations. No trip to Zambia or Zimbabwe is complete without a visit to the thundering Victoria Falls!

South Luangwa National Park

Home to a variety of animals, here guests can enjoy walking safaris and stay in small exclusive bush-camps.

Lower Zambezi National Park

A more remote but diverse safari with lower visitor numbers, beautiful small camps, and intense wildlife encounters.

Victoria Falls

Bordering Zambia and Zimbabwe and also close to Botswana, Victoria Falls offers an impressive sight from both sides.

Mana Pools National Park

Located in the heart of the Zambezi Valley offering an authentic outdoorsy experience including canoe safaris.

Hwange National Park

Set in northwest Zimbabwe, offering high quality camps, safari guiding and great year-round wildlife viewing.

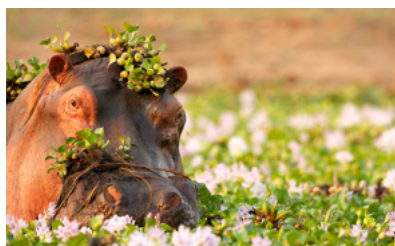
Lake Kariba

A host of mammals and birds live in this diverse habitat including leopard, lion, hyena and cheetah. The area is also a walker's paradise!



When to go

Zambia's dry season is between May and October with game concentration at its peak in September and October. Zimbabwe's dry season is between July and October when the game viewing is at its best.





NAMIBIA

Namibia is famous for its vast dunes - a kaleidoscope of colour, shades and movement. Home to the fascinating Himba tribe, rare desert-adapted wildlife and serene landscapes, it is a photographer's dream!

Sossusvlei

The dunes in this area are some of the highest in the world, providing stunning photography in the morning and evening light.

Etosha National Park

One of the premier parks in Africa with a huge number of species including lion, elephant, ostrich and the endangered black rhino.

Damaraland

This dry mountainous region is home to desert-adapted elephant and lion. Rhino tracking is a real highlight.

Kunene River

This remote northern area is home to the Himba people. Serra Cafema Camp here is known for its mind-blowing desert and river landscapes.

Fish River Canyon

Africa's largest canyon popular with hikers and photographers. With plenty to explore, guests can stay in luxury lodges.

Kolmanskop

An eerie abandoned mining town being slowly buried by the shifting sands of the Namib Desert. Makes for fascinating photography!



When to go

Any time from May to December is suitable for travel in most areas. Winter days are warm, dry and comfortable, whilst also being the best time to see wildlife. In the heat of the summer, December to March, temperatures can reach above 40°C.





TANZANIA

Known for its grassy plains, Tanzania is not only a wildlife lover's dream, it also boasts three of the major highlights of Africa - the Serengeti National Park, Mount Kilimanjaro and the Ngorongoro Crater.

Lake Manyara National Park

Known for its tree-climbing lions, hippo pools and, when conditions are right, pink flamingos grazing along the shores of the lake.

Serengeti National Park

A land of wide-open plains and Acacia trees, home to huge herds of wildlife and the predators that follow them.

Mount Kilimanjaro

Africa's highest peak is also the world's largest free-standing mountain and considered a 'hike' rather than a mountain climb.

Tarangire National Park

This lesser visited wildlife hotspot is home to epic baobab trees, grassy savannah plains and over 550 bird species.

Ngorongoro Crater

This vast volcanic caldera is home to a myriad of wildlife year-round, including the endangered black rhino and huge tusked elephants.

Zanzibar

The 'Spice Island' is famed for its pristine beaches, exotic spices and historical Old Stone Town – the perfect end to a safari!



When to go

Low season is March to May which is the rainy season but a more affordable time to visit. Peak season is July to September when massive herds of plains game are moving across the expanse of the Serengeti and Masai Mara.





KENYA

The original safari destination – Kenya is pure ‘Out of Africa’ and home to endless plains, huge herds of wildlife, colourful cultures and famous national parks. Be sure to book early for a stay at the renowned Giraffe Manor!

Masai Mara National Reserve

This is a romantic landscape of grassy plains with flat-topped acacia trees and sweeping views over plateaus. Home to the fascinating Maasai tribespeople.

Lake Nakuru National Park

Lake Nakuru is a bird watcher’s paradise and home to around 450 avian species including thousands of pink flamingos, when conditions are right.

Lake Naivasha National Park

This lake attracts a wide range of game including giraffe, buffalo and hippo. It is also home to a huge variety of birdlife.

Samburu National Reserve

This dry, dramatic and pristine terrain features desert-adapted wildlife and is the traditional land of the Samburu people.

Meru National Park

With lush vegetation and diverse habitats, Meru is home to wildlife including an incredible array of rare birdlife.

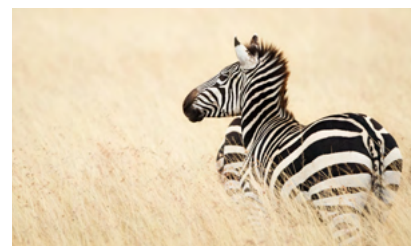
Amboseli National Park

With Mt Kilimanjaro as its backdrop, Amboseli’s vast dry plains are often frequented by travelling herds of elephant.



When to go

July to September is dry season and the prime time to visit as it is the height of the Great Migration with wildlife easier to spot. January and February are peak visitor months, but prices are high, the National Parks are crowded and the temperatures are hot!





UGANDA & RWANDA

Both Uganda and Rwanda offer not only excellent gorilla trekking, but a range of National Parks to explore including Queen Elizabeth, Kibale, Murchison Falls, Kidepo Valley, Bwindi and Akagera National Parks.

Where is the best place to do a gorilla trek?

Treks in Uganda are longer and often more challenging with steep terrain. We love Uganda as it offers guests the ability to combine gorilla and chimpanzee tracking along with exploring the many National Parks. There are also more choices of accommodation.

Rwanda offers shorter and easier treks, so although the permits are more expensive than Uganda it is a great option for those short on time.

What are the treks like?

Trekking times can vary depending on the location of the gorillas (anything from an hour to 6 hours). Once the gorillas are found you enjoy a maximum of one hour with them.

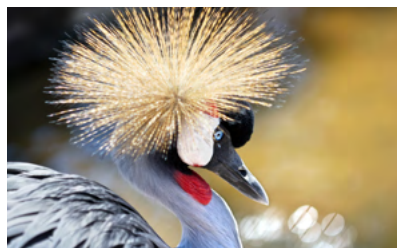
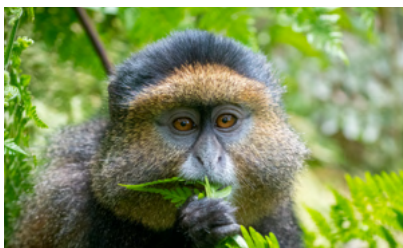
Permits

You will need a permit to do a gorilla trek, which you need to book well in advance, as a limited number of permits are available each day.



When to go

Travellers visiting Uganda and Rwanda may be more comfortable doing their gorilla trekking experience during the drier seasons of December to February and June to September.





FLY-AROUND SAFARIS

For those wanting a truly once-in-a-lifetime journey, travelling in luxury and style, we highly recommend a fly-around safari. Fly in to remote airstrips, cutting out time on the road and maximising your time on safari.

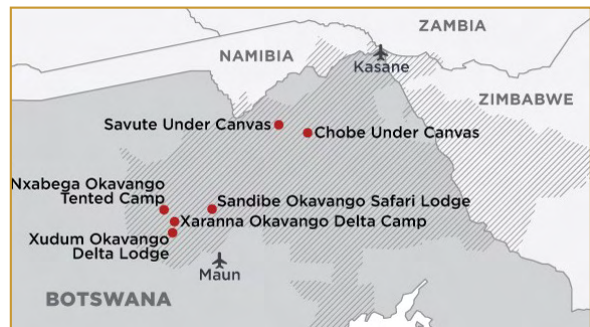
FLY AROUND EAST AFRICA

This is the very best of Kenya and Tanzania in luxury and style. Stay at your choice of exclusive safari camps in the Masai Mara, Serengeti and Ngorongoro Crater. Flying in between ensures you spend more of your time actually on safari! You'll be treated to exceptional cuisine and impeccable service – you may never want to leave!



FLY AROUND BOTSWANA

Let us personalise your safari with exceptional lodges and camps. Flying over the Delta is a highlight in itself! You may include up to three destinations in your itinerary to experience the full contrast of landscapes, or choose to spend more nights at just one or two destinations for a more in-depth experience: Chobe National Park, Savute National Park and the Okavango Delta.



FLY AROUND THE OKAVANGO DELTA

Explore this extraordinary region, staying at your choice of tented camps and lodges. Tented camps get you closer to nature, but with all the luxury comforts, whereas a lodge allows you to keep the wilderness a little more at arm's length. The camp and lodge locations offer a variety of natural settings, each with its own unique features.





OTHER JOURNEYS

There are many ways to experience a safari in Africa, along with all the other aspects of this diverse continent. Whether travelling with family, in a small group, on a cruise or a train, there is something for you.



LUXURY RAIL JOURNEYS

Rovos Rail offer luxury rail journeys through the heart of Africa. Ranging from two to 15 nights these journeys link some of the continent's greatest destinations. Enjoy the comforts of a private cabin, magnificent scenery, gourmet cuisine and fine wines, along with discreet and friendly service.



ACTIVE JOURNEYS

Walking safaris can be enjoyed from the comforts of your lodge, or for a more active experience you can walk between mobile camps. Specially trained guides will ensure your safety and comfort throughout. A horseback safari is another exciting option.



CRUISE JOURNEYS

A luxury river boat safari on Botswana's Chobe River is a truly relaxing experience. For something completely different with fascinating cultural encounters try a small-ship cruise on the West African coast or in the dreamy islands of the idyllic Seychelles.

FAMILY JOURNEYS

Africa is a wonderful family destination for creating memories to last a lifetime. With specially chosen lodges and camps, your family will be captivated and charmed by the African people and expert guides.

SMALL GROUP TOURS

We have a range of small group tours for various destinations in Africa. Guests will travel with a local guide and like-minded travelling companions. These can also be a great option for a more cost effective way to travel.



PLANNING YOUR *African Safari*

Africa is a big continent - unless you have plenty of time (and budget) we suggest visiting one or two countries and seeing them well. It is recommended to allow time for travel to/from different regions (ie: linking Eastern and Southern Africa).

World Journeys tailor make itineraries to suit your travel style and needs. With a beautiful range of 4 & 5-star lodges and camps, we can also include a range of experiences such as photography, boating, fishing and horseback safaris.

- How long do you have to explore?
- What are you hoping to see and experience?
- What standard accommodation is wanted?
- What is the anticipated budget?

Images courtesy of: andBeyond; Grande Provence Heritage Wine Estate (p.3), Desert & Delta Safaris (p.4), Robin Pope Safaris (p.5), Scott Ramsay/Robin Pope Safaris (p.8), Rovos Rail (p.11), Zambezi Queen (p.11).



FOR MORE INFORMATION CONTACT YOUR TRAVEL PROFESSIONAL

